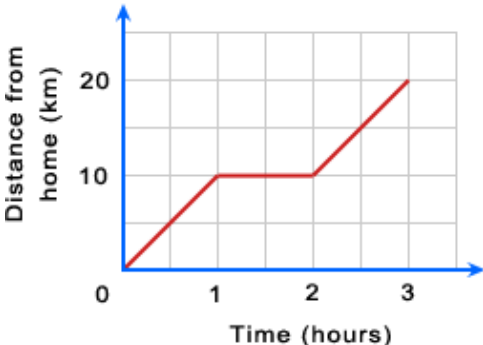
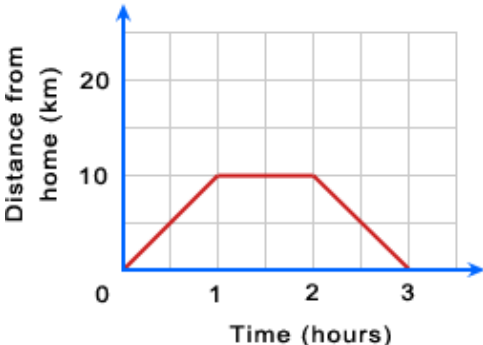
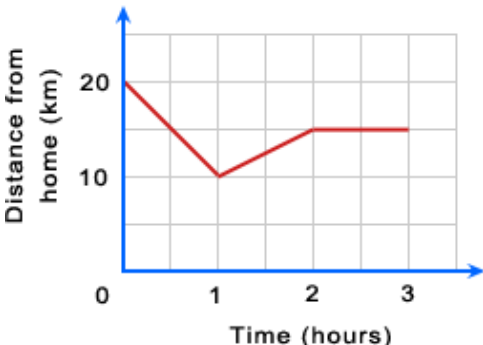
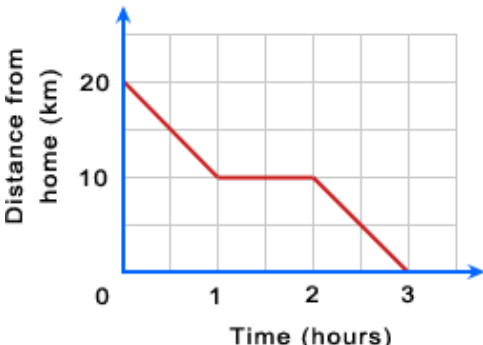


MIX AND MATCH GRAPHS TO STORIES

Graphs are pictures that tell a story. Use your understanding of graphs to complete these tasks. Use the widget [Graphing a flat journey](http://www.hotmaths.com.au/FreeActivities) provided by HOTmaths (www.hotmaths.com.au/FreeActivities) to help you link journeys and graphs.

TASK 1 Match the story to the graph

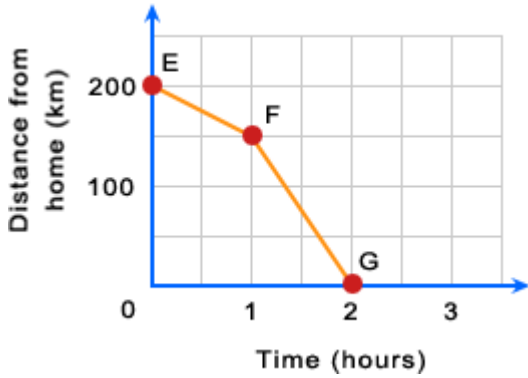
Read the story of each journey and draw a line from that story to the travel graph that describes it.

Graph	Story
	<p>Sue takes 1 hour to cycle 10 km towards home. She then cycles 5 km away from home in 1 hour and then rests for 1 hour.</p>
	<p>Sue takes 1 hour to cycle 10 km towards home. She stops to rest for an hour then cycles another 10 km all the way home in 1 hour.</p>
	<p>Sue takes 1 hour to cycle 10 km away from home. She stops to rest for an hour then cycles back home in 1 hour.</p>
	<p>Sue takes 1 hour to cycle 10 km away from home. She stops to rest for an hour then cycles 10 km further from home in 1 hour.</p>

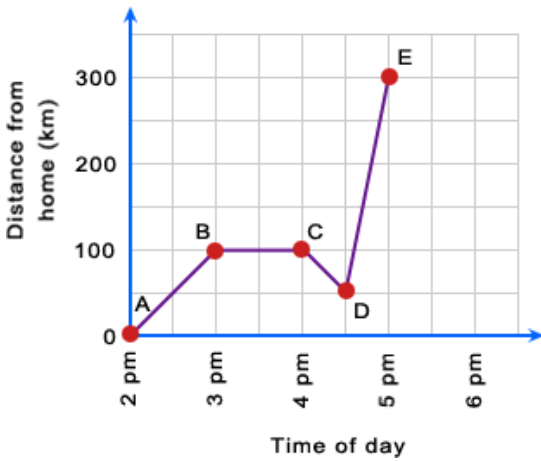
TASK 2 Create your own stories

Write a short description of each journey shown below.

1



2



TASK 3 Write questions about the graphs

Write two questions that can be answered from the graph below. Show the questions to your friends to see if they give the answers you expect.

